



Number 32

Health Sciences Information Service

Alaska's Medical Library

August 2004

When you need answers fast -- STAT!Ref it!

STAT!Ref
ELECTRONIC MEDICAL LIBRARY

In our June newsletter, we asked subscribers to take an online survey to help select our 2004-2005 electronic library of medical reference books. With your input, some unexpected year-end funds, and a big push to bolster resources for remote users, we have installed our new STAT!Ref library of 35 searchable full-text titles accessible to everyone living in Alaska.

First time titles in our library include *A Nurse's Guide to Cancer Care*, *AJCC Cancer Staging Handbook*, *Brunner & Suddarth's Textbook of Medical-*

Surgical Nursing, *Harrison's Principles of Internal Medicine*, *ICU Book*, *Nursing Diagnosis Reference Manual*, *Primary Care for Physician Assistants* and *Red Book 2003*. Two excellent dictionaries, *Taber's* and *Stedman's* are also included. To view the full list of titles and explore the library, visit <http://online.statref.com/default.asp?grpalias=UA> Call HSIS at 1-888-997-7878 (toll-free in Alaska) or 786-1870 (in Anchorage) to arrange individual access and/or request a Quick Online Guide card.

Searching:

You can now choose from two interfaces: *Quick Search* or *Classic*. The new *Quick Search* interface has a clean streamlined look, and offers a very easy way to search all our STAT!Ref titles at once. Busy physicians prefer this as, rather like Google, it automatically applies the best precisions. Use the *Quick Search* interface if you're in a hurry, or just want to do a straightforward search. The *Classic Search* interface is still available if you want more control of your results. You can search a single title or a set of titles, as well as include synonyms and/or suffixes and set the precision yourself.

? Throughout the site, watch for these help icons. Click on them for tips and information about STAT!Ref's many features.

Printing:

Click on the View Text icon or the blue heading to retrieve a document. STAT!Ref documents are often many pages long. To print a portion of one, use your browser to select the range of text you want to print using your mouse. Then go to your File menu and select Print. In the Print dialog that displays, under Page Range, choose Selection. This procedure will print only what you have selected. You can also copy and paste text directly into documents by highlighting the text with your mouse, then copying (Control-C) and pasting (Control-V). Internet Explorer's print dialog contains an Options tab, where frame printing is set up. Here you can choose to print the frames 1) As laid out on the screen; 2) Only a selected frame (the last frame you clicked on) or 3) All frames individually.

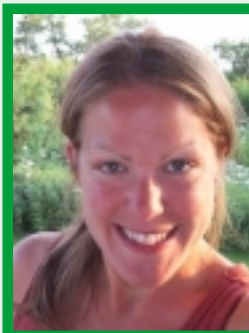
Customizing:

Click on the Sign in to My STAT!Ref link to set up an account that lets you configure your own personal display options - default search interface, set up your own search sets, appearance of screen and logoff behavior.

GIDEON UPDATE

GIDEON now offers a "What's New" section covering the week's update in Infectious Disease. New graphs in the Epidemiology section display the number of cases over a number of years for many diseases. Continuous updating on the Web means GIDEON is truly up to the minute!

To access, click on <http://tinyurl.com/4ophu> If you have any problems connecting, call HSIS staff for assistance.



A new face at HSIS...

This week, Tracy Leithauser joins HSIS as our new office manager. Also a distance student in library science at U. of Washington, Tracy is keen to experience an academic library first-hand and loves to do research.

University of Alaska Anchorage - Consortium Library
3211 Providence Dr., Anchorage, AK 99508

(907) 786-1870

Fax (907) 786-1608

Toll free: 1-888-997-7878

ayhsis@uaa.alaska.edu

Please visit <http://www.lib.uaa.alaska.edu/hsis/> for more information

Sally Bremner 9/02/04